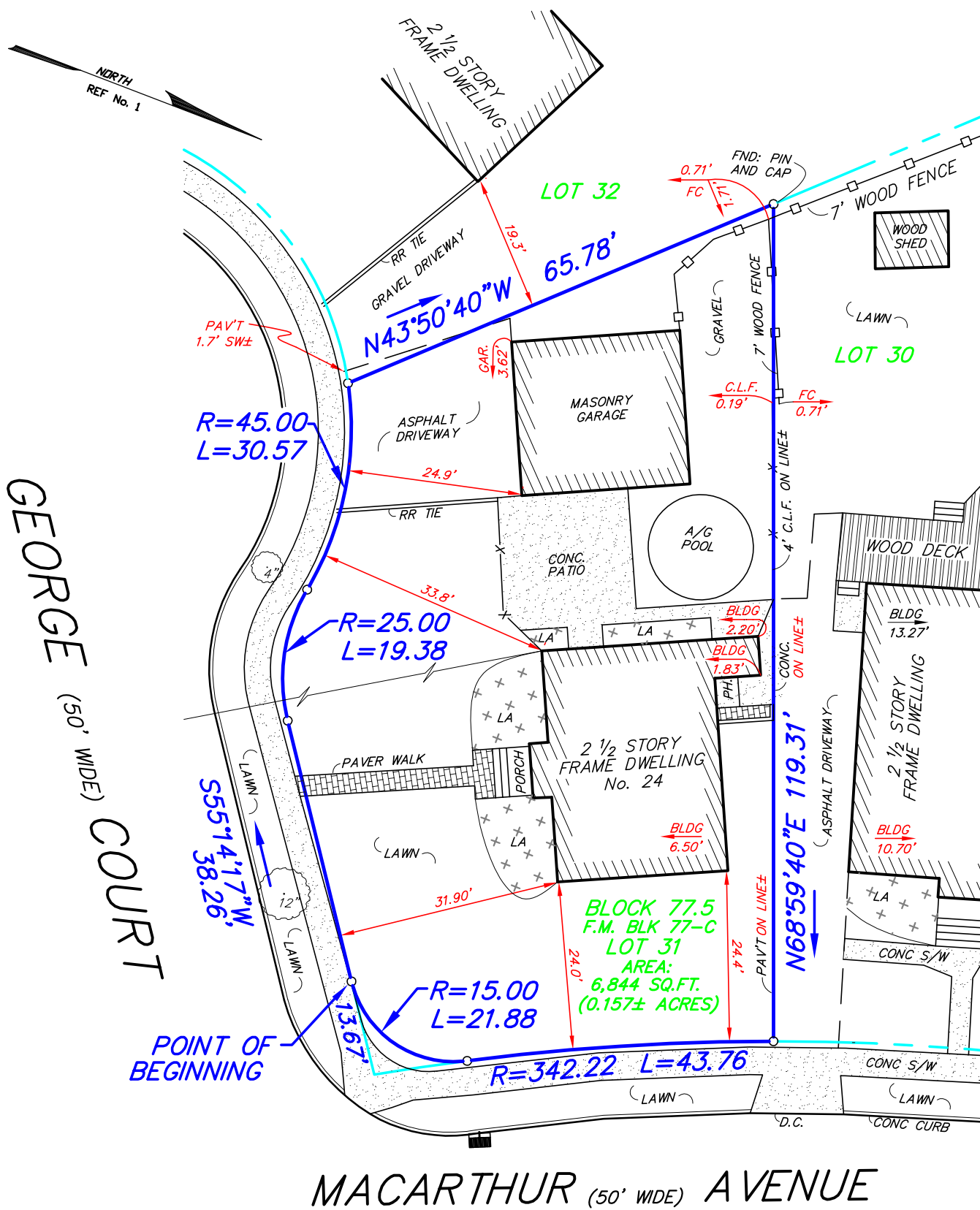


MAP OF PROPERTY PREPARED FOR
SAMPLE SURVEY
 24 MACARTHUR AVENUE
 TAX LOT 31 BLOCK 77.5
 BOROUGH OF HASBROUCK HEIGHTS
 BERGEN COUNTY, NEW JERSEY

CERTIFICATION:

I HEREBY CERTIFY TO THE FOLLOWING PARTIES LISTED BELOW, THAT THIS MAP HAS BEEN PREPARED UNDER MY DIRECT SUPERVISION AND IS BASED UPON AN ACTUAL FIELD SURVEY PERFORMED 01-09-2011 AND TO THE BEST OF MY PROFESSIONAL KNOWLEDGE, INFORMATION AND BELIEF, CORRECTLY REPRESENTS THE CONDITIONS FOUND EXCEPT SUCH EASEMENTS NOT DISCLOSED IN THE TITLE REPORT, OR FOUND BELOW THE GROUND.

THIS MAP IS CERTIFIED TO:
 -SAMPLE



COLOR KEY:
 -BLUE: BOUNDARY LINES, COURSES AND DISTANCES
 -GREEN: TAX LOT/BLOCK AND AREA
 -RED: BOUNDARY OFFSETS
 -BLACK: EXISTING FEATURES

ABBREVIATIONS:
 -FC: FENCE CORNER -MH: MANHOLE -PH: PORCH
 -DC: DROP CURB -WV: WATER VALVE -LA: LANDSCAPING
 -GV: GAS VALVE -UP: UTILITY POLE -EB: ELECTRIC BOX

NOTES:
 1.) THIS SURVEY HAS BEEN PREPARED IN ACCORDANCE WITH N.J.A.C. 13:40-5.
 2.) NOT TO BE USED FOR CONSTRUCTION PURPOSES

REFERENCES:
 1.) A CERTAIN FILED MAP ENTITLED "MAP OF GRANDVIEW COURT SECTION No. 2, BOROUGH OF HASBROUCK HEIGHTS, BERGEN COUNTY, NJ", FILED IN THE BERGEN COUNTY CLERK'S OFFICE ON MARCH 24th, 1943 IN CASE No. 3333
 2.) DEED BOOK: 8284 PAGE: 516
 3.) OFFICIAL TAX MAP OF HASBROUCK HEIGHTS

BUTLER
 SURVEYING & MAPPING, INC.
 PROFESSIONAL ENGINEERING AND SURVEYING SERVICES
 177 FRANKLIN AVENUE • MIDLAND PARK • NJ • 07432
 PH: (201) 390-0740 • FAX: (201) 857-3695 • E: INFO@BUTLERSM.COM
 DIVISION OF CONSUMER AFFAIRS LICENSE NUMBER • 24GA28157600

John J. Butler
 JOHN J. BUTLER, PLS

Designer: JJB
Draftsman: WMB
Checked By: JJB
Proj: BSM11-1213
Scale: 1" = 20'
Date: 01/13/2011
Sheet 1 of 1